

Funky Fruit



makower uk

1384 Broadway
New York, NY 10018
(800) 223-5678

www.andoverfabrics.com

Funky Fruit fabrics by
makower uk

The Henley Studio

Quilt designed by Jean Ann Wright • Quilt size: 58" x 70"

Funky Fruit Quilt

Introducing Andover Fabrics new collection: Funky Fruit by The Henley Studio for Makower UK
Quilt designed by Jean Ann Wright

Fabric Requirements

		Yardage	
Fabric A	outer border	1¾ yards	TP-1060-1
*Fabric B	blocks, borders	2 yards	TP-1066-R
Fabric C	center	1 panel	TP-1067-1
Fat ¼'s	blocks	fat ¼ ea.	TP-1062-B, TP-1062-Q, TP-1063-B, TP-1063-Q, TP-1064-G, TP-1064-R, TP-1065-G, TP-1065-Q, TP-1066-B TP-1066-G, TP-1066-P TP-1066-Y
Backing		4½ yards	TP-1061-1

*includes binding

Quilt finishes 58" x 70"
70 Pieced Blocks: 4" x 4"

Celebrate the bounty of summer with this bright, cheery quilt with images of fruit trees and jars of jam. A country orchard is the setting for this easy-to-piece quilt that allows the novelty prints to do most of the work! The center panel and outer checked border will look like patchwork once they are quilted. The pieced blocks couldn't be simpler since they are easily made with a stitch-and-flip piecing method.

Cutting Directions

Note: Note: All measurements are cut sizes and include ¼" seam allowances. A fat ¼ is a 9" x 20"-22" cut of fabric. Some borders include extra length as described in the Assembly. WOF designates the width of fabric from selvedge to selvedge (approximately 42" wide).

- Fabric A** Fussy cut (2) side borders 6½" x 58½", cut lengthwise (see Step 6)
Fussy cut (5) strips 6½" x 27", cut crosswise and pieced to make the following:
(2) top/bottom borders 6½" x 58½"
- Fabric B** Cut (4) strips 2½" x 68" for binding, cut lengthwise
Cut (2) side borders 1½" x 56½", cut lengthwise
Cut (2) top/bottom borders 1½" x 46½", cut lengthwise
Cut (2) inner side borders 4" x 44" (these will be trimmed to fit in Step 1)
Cut (2) inner top/bottom borders 4" x 30" (these will be trimmed to fit)
Cut (280) squares 1½" x 1½", cut from leftovers
- Fabric C** Fussy cut 1 panel ¼" beyond the printed design (approx. 24" x 42")
- 12 Fat ¼'s** Cut 11 or 12 rectangles 2½" x 4½" from each (140 total)
- Backing** Cut (2) panels 34" x 78", pieced to fit quilt top with overlap on all sides

Making and Assembling the Quilt

1. Fussy cut the Fabric C center panel. Sew long Fabric B 4" borders to the sides. Trim the ends of borders even with the panel. Sew short Fabric B 4" borders to the top and bottom. Trim even with the sides. Trim this pieced unit to 28½" x 48½", keeping the side borders an even width and the top/bottom borders an even width. Note that the width of the side borders may be different from the width of the top/bottom borders. The important thing is to trim the panel plus borders to the correct measurement so the pieced borders will fit.
2. Referring to Diagram 1, sew 2 rectangles 2½" x 4½" together to make a square. Make 70 squares like this, referring to the Quilt Diagram and photograph for fabric combinations.
3. Draw a diagonal line on the wrong side of each Fabric B 1½" square. Referring to Diagram 2, place a marked square on a pieced square from Step 1, right sides together, aligning raw edges at one corner. Stitch on the drawn line; trim away and discard excess fabric. Press open. Repeat on each corner of the pieced square, watching orientation of the sewing lines. Make 70 blocks like this.

Funky Fruit Quilt

4. Join 12 blocks in a vertical row, keeping the orientation of the blocks as shown. Make 4 vertical block rows. Join 2 of the rows side by side and sew to the side of the center panel. Repeat on the opposite side. Likewise, join 11 blocks in a horizontal row and sew to the top of the quilt. Repeat for the bottom.

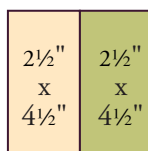


Diagram 1

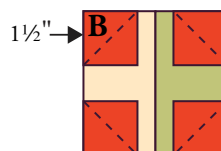
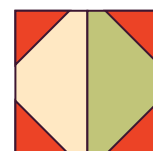


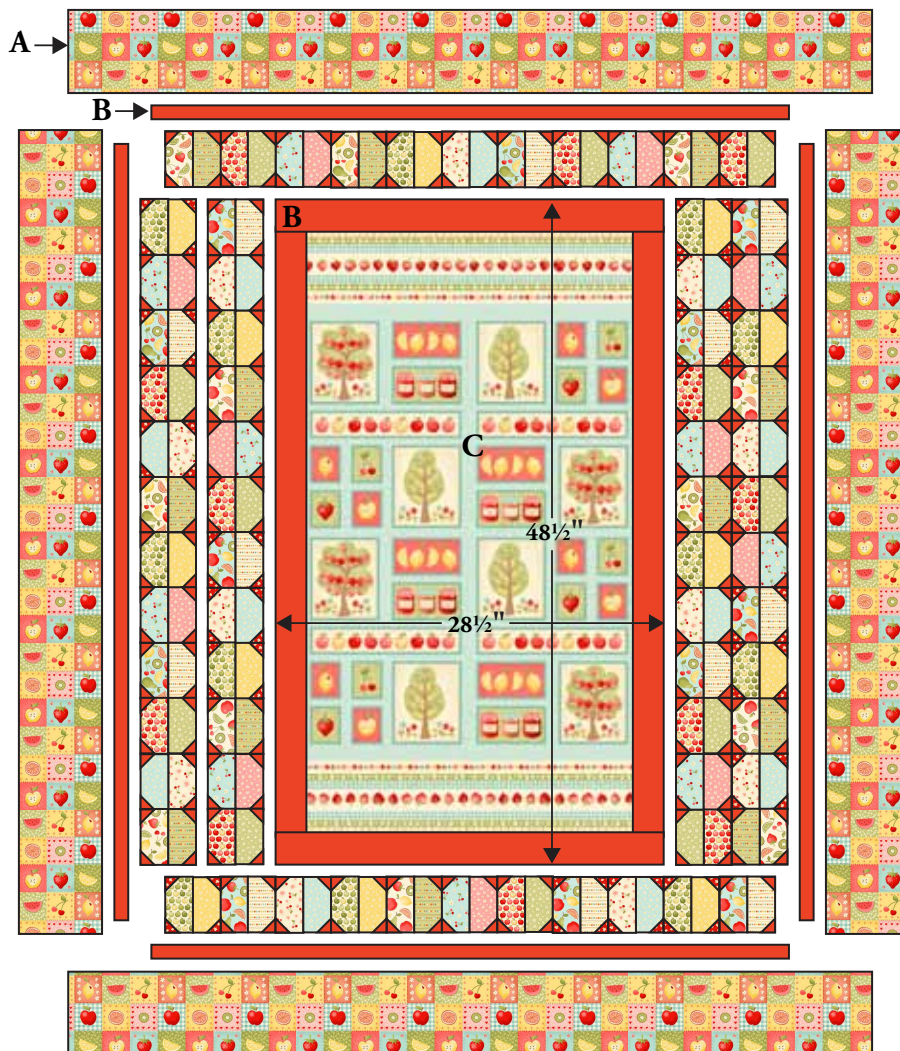
Diagram 2



Block
Make 70

5. Sew long Fabric B $1\frac{1}{2}$ " borders to the sides. Sew short borders to the top and bottom.

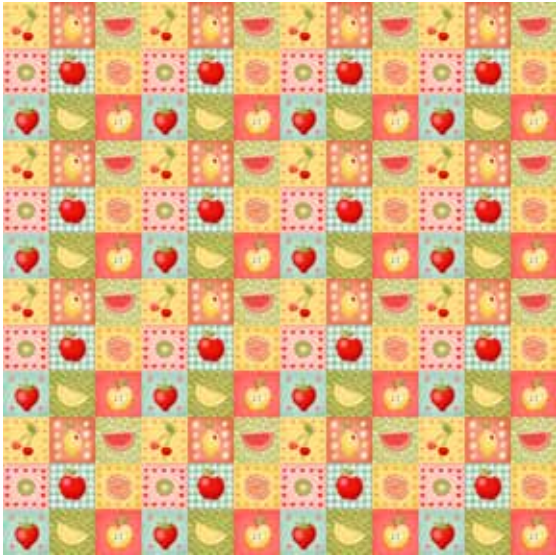
6. The borders from Fabric A should be fussy cut so that the strips are 3 printed squares wide, plus $\frac{1}{4}$ " seam allowances on each side. To keep the printed motifs upright in the quilt, cut the side borders $58\frac{1}{2}$ " lengthwise. For the top/bottom borders, cut 5 strips crosswise from the remaining fabric, again cutting the strips 3 printed squares wide plus seam allowances. These strips will each be approximately 27" long. Join the crosswise strips as needed end-to-end, matching the printed squares so the design is continuous. Sew the lengthwise borders to the sides and the pieced crosswise borders to the top and bottom, trimming as needed. Pay attention to the orientation of the printed motifs.



Quilt Diagram

Finishing the Quilt

7. Layer the quilt with batting and backing and baste. Quilt in the ditch around borders and block patches. Quilt around the printed motifs in the center panel and outer borders. Bind to finish the quilt.



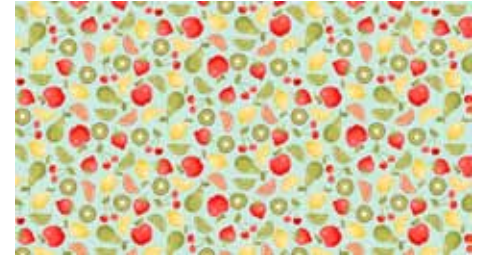
TP-1060-1



TP-1061-1



TP-1062-Q



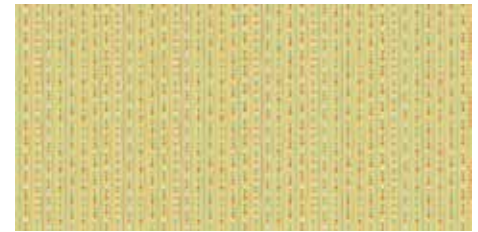
TP-1062-B



TP-1063-B



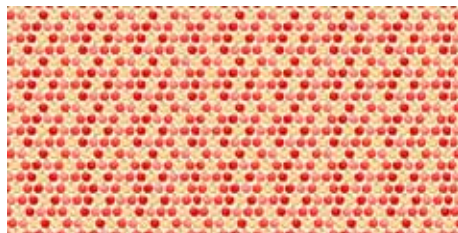
TP-1064-G



TP-1065-G



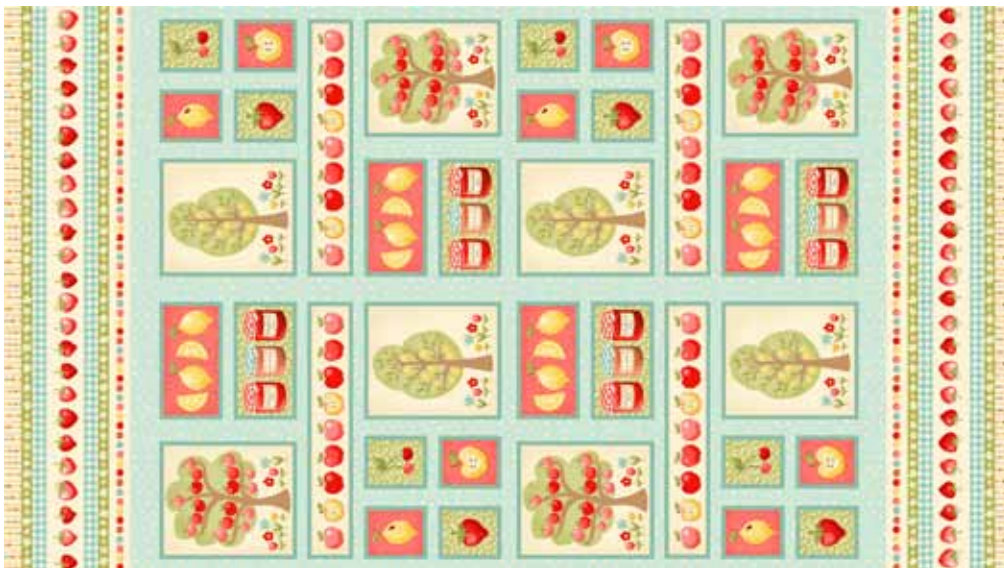
TP-1063-Q



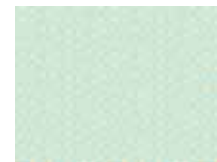
TP-1064-R



TP-1065-Q



TP-1067-1



TP-1066-B



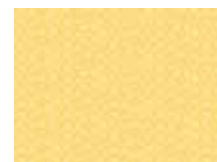
TP-1066-G



TP-1066-P



TP-1066-R



TP-1066-Y

Fabrics shown are
 10% of actual size.